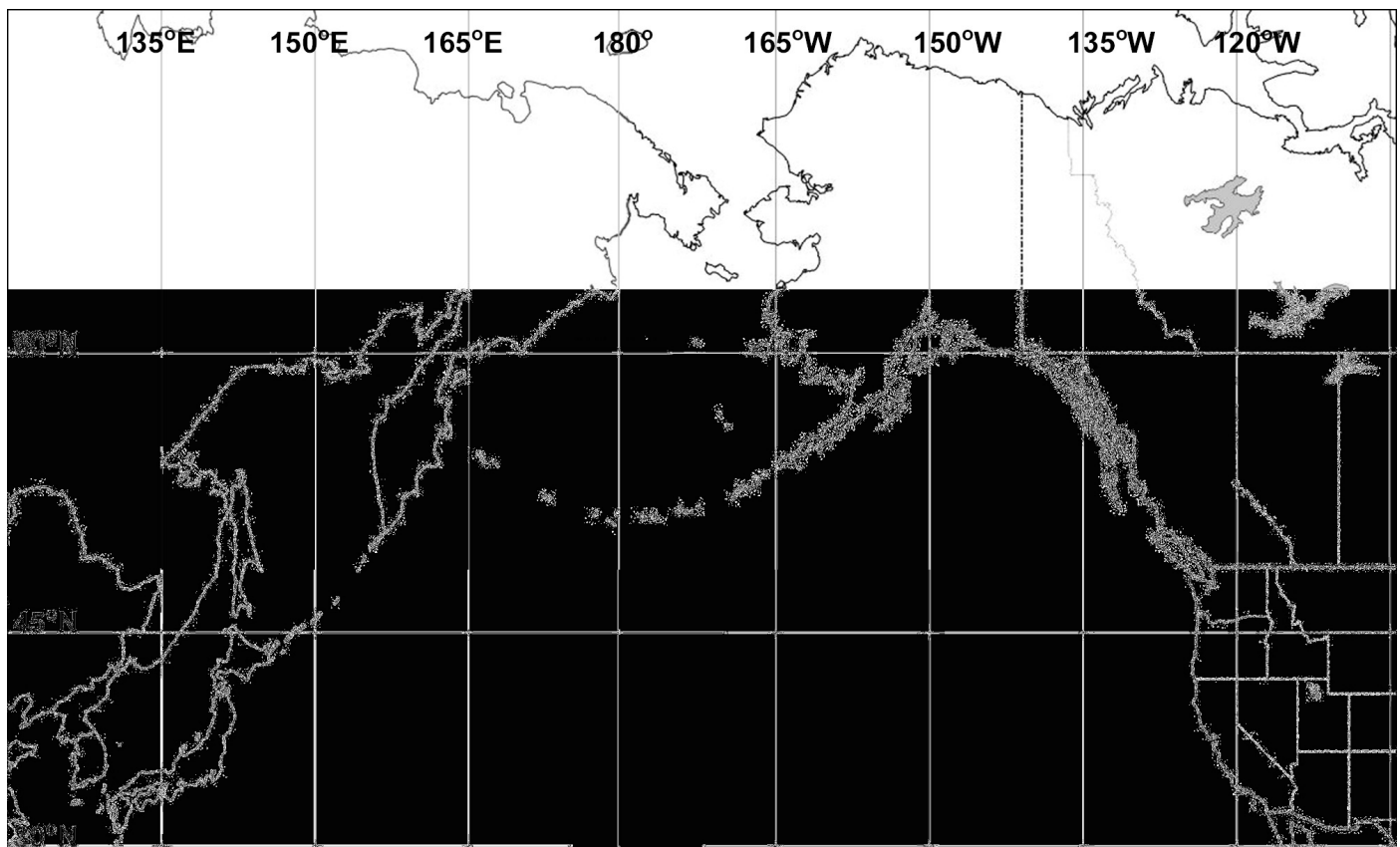
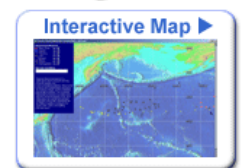


Go to http://www.signalsofspring.net/albatross_activity.cfm to answer the following questions. The interactive maps work best using Internet Explorer 5.5 or higher and Macromedia Flash Player.

1. Select Albatross as your species. Then click on the Data Table icon. Use the satellite transmission data to plot on the map the Black-footed albatross's locations during its migration and foraging movements throughout the North Pacific Ocean during summer and early fall.



2. Describe the path that the bird took using geographic and political features seen on the available maps.



3. For how many days was the bird tracked?

4. Use the following website to measure approximately how far the bird traveled during this journey in miles. **<http://jan.ucc.nau.edu/~cvm/latlongdist.html>**

5. How many miles per day did the bird travel on average?

6. Compare the paths and speeds of other birds to determine the average distance moved per day for the group.
